

104 South Main, St. Charles, Mo

Suite L1 2400 Sf



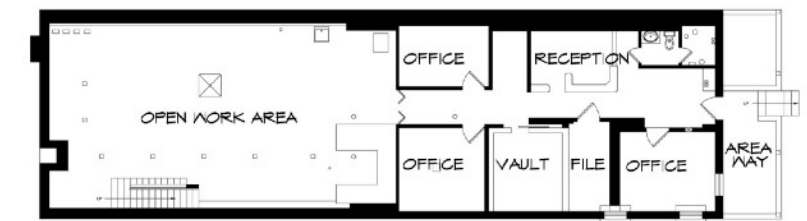
This 2400sf space on the lower level of 104 South Main is 50% finished as office space and the balance as open workshop/display/storage. The space is adjacent to a large public parking lot with easy access. Near coffee shops, more than 30 restaurants, OPO Tech Center, shops, galleries, Katy Trail and numerous other amenities in a walking district environment makes an interesting community for work and entertaining. Numerous small businesses including tech, and professional offices make Main Street their home. This space has served as antique shop, design/build company, printer, roofing company offices.

- \$1500 month modified gross. +gas, elec. Three private offices with open work area, bathroom, storage, vault. \$7.50psf



Penny Pitman
Cell: 636-734-5255 call or txt
Email: pitman@ironstarinc.com
ironstarinc.com

Specializing in Historic
St. Charles Properties



⊗ LOWER LEVEL FLOOR PLAN
SCALE 1/16" = 1' - 0"

SCALE:

104 S. MAIN STREET
ST. CHARLES, MISSOURI